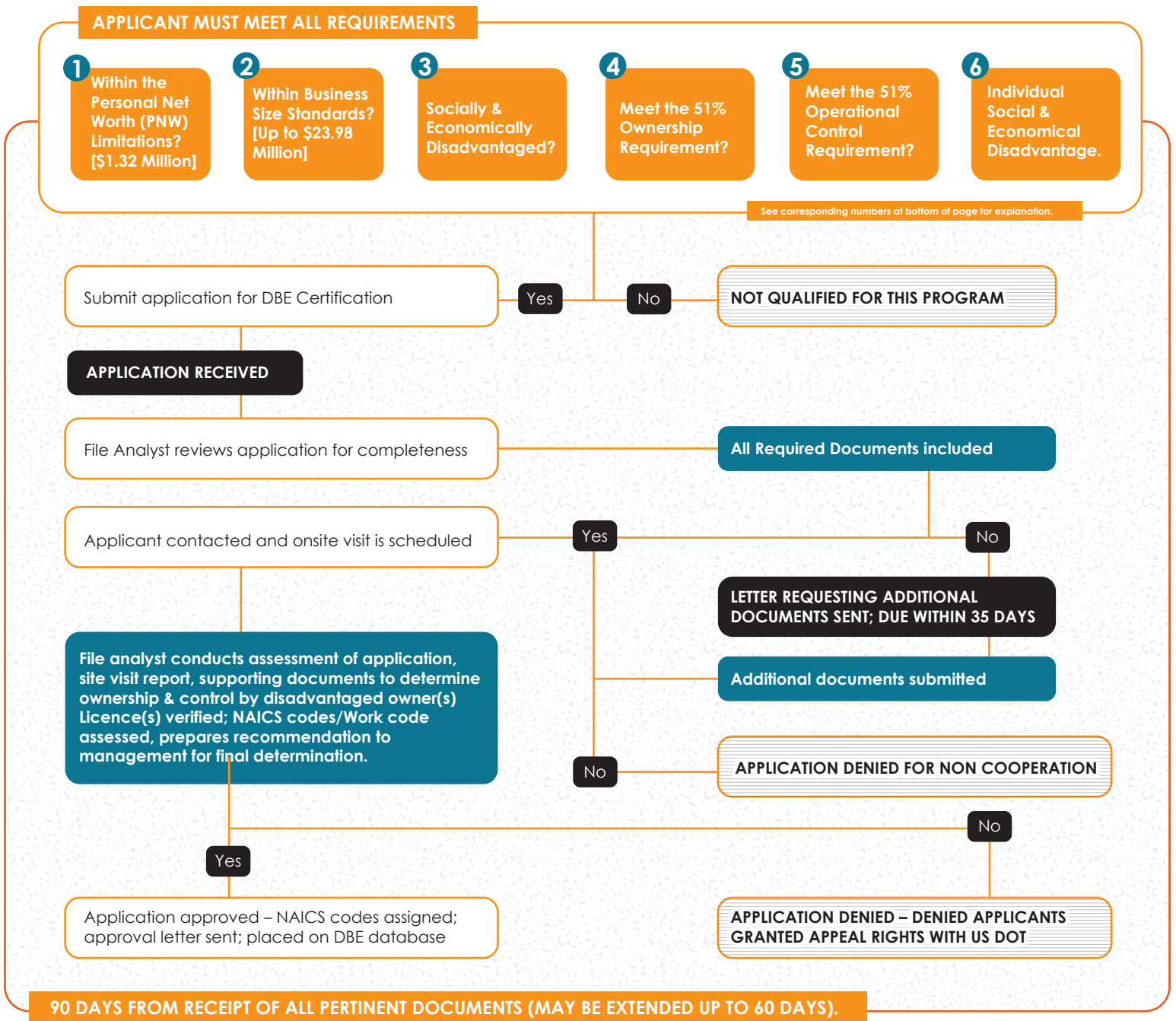


QUICKSTART DBE CERTIFICATION FLOWCHART



1
If an individual demonstrates that he/she is able to accumulate substantial wealth, the individual's claim of economic disadvantage may be denied, even though the individual's PNW is less than \$1.32 million.

2
Business Size Standards are set by the US Small Business Administration (SBA). Size standards are a three year average annual receipts. Visit 13 CFR §121.201 or <http://sba.gov/size> for more information.

3
Social & Economical Disadvantaged Groups:
1. Hispanic
2. Black
3. Subcontinent Asian
4. Native American
5. Asian Pacific
6. Female

6
Individual Determination of Social & Economic: Disadvantage Individuals who do not fall within six presumptive groups are encouraged to Visit Appendix E to Part 26 for SBA regulations concerning social & economic disadvantage determinations. 13 CFR 124.103(c) & 124.104.